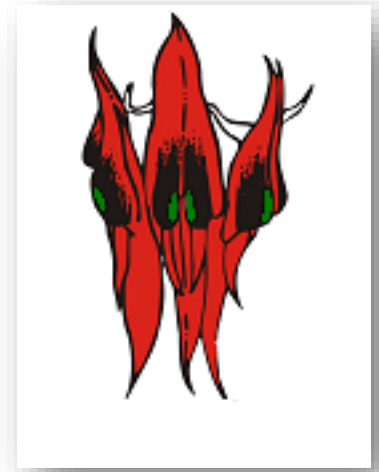


Nullagine Primary

A Remote Community School

*We work together as a community to realise each
Students full potential and wellbeing*



Nullagine Primary School Instructional Model 2020-2022



Nullagine Primary School Instructional Model

Rationale

Nullagine Primary School is committed to providing a safe, supportive and inclusive environment for all students, staff and members of our community. Our school recognises the importance of the partnership between our school, parents, carers and community to support student learning, engagement and wellbeing. We share a commitment to, and a responsibility for, creating an inclusive and safe school environment for our students.

Nullagine School's instructional model is designed to allow for consistent and collaborative instruction across classes. The instructional model will be used to determine how teaching and learning will take place for individuals and groups of students. The instructional model has been devised around evidence based approaches. It will be adopted by all teachers at Nullagine Primary School, across all learning areas.

As per the Department of Education and Training's guidelines (2015): An instructional model:

- supports schools to develop a shared language about teacher practice;
- supports teacher reflection and informs the professional learning needed; and
- engages and motivates teachers to consider how their teaching practice can best support student learning.

Implementation

Vision

At Nullagine Primary School we will provide a safe, caring and inclusive learning environment that inspires, challenges and supports all students to achieve their personal best.

Philosophy

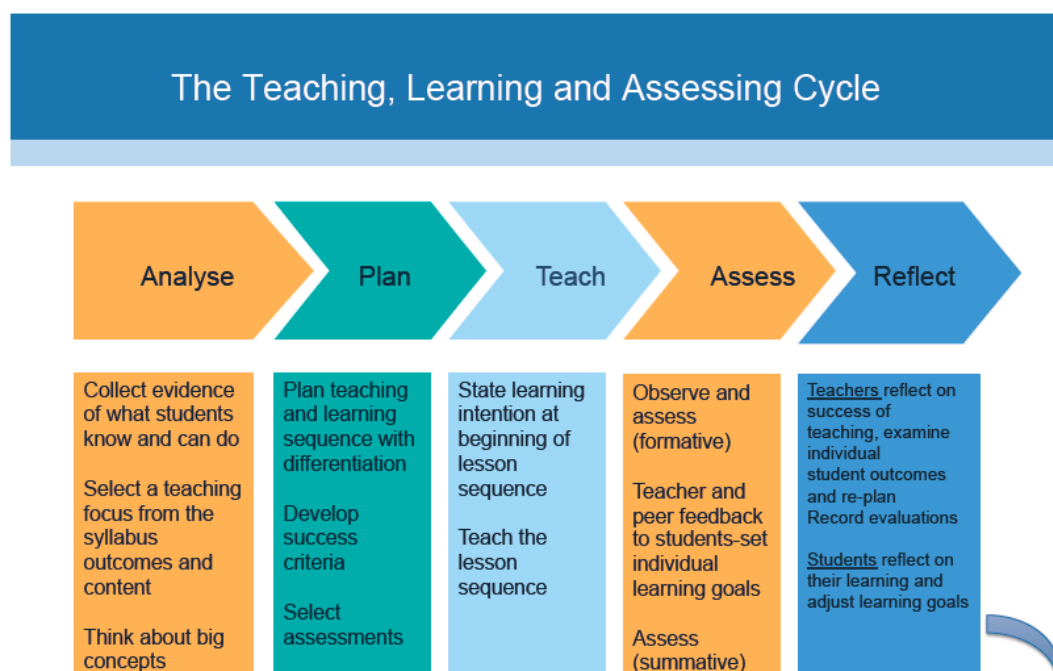
At Nullagine Primary School:

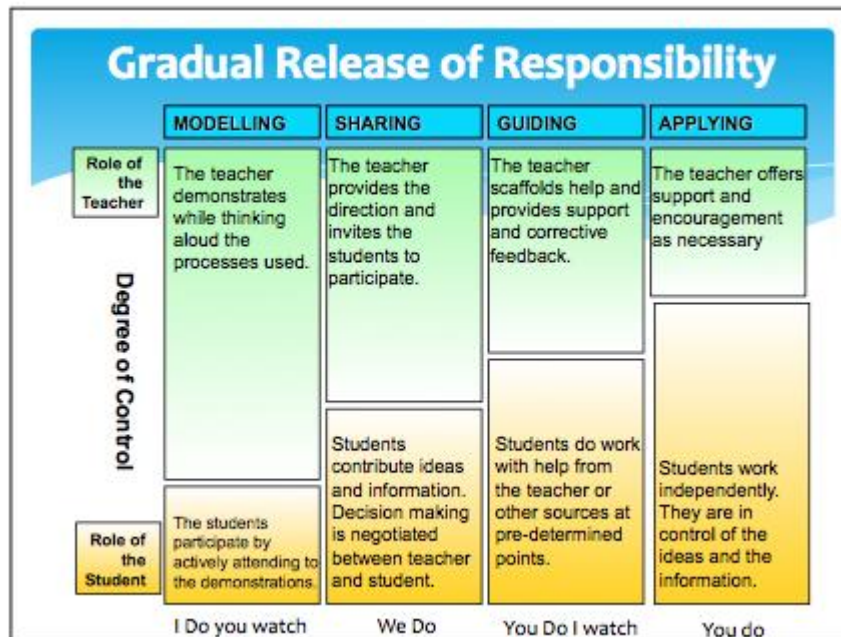
- we will provide a safe, nurturing and engaging learning environment; ☑ we will be inclusive and accept all members of the school community;
- we will implement consistent whole school teaching and learning practices through agreed systems and processes;
- we will provide explicit instruction with clear learning intentions, success criteria and high expectations of all students;
- we will encourage each student to strive for their personal best through differentiated learning;

- we will empower students to take ownership and be actively involved in their learning;
- we will encourage students to be active participants in their school and wider community;
- we will value creativity and innovative thinking;
- we will closely monitor student wellbeing and achievement; and
- we will value our role as educators and through targeted professional development strive for continuous improvement.

The Teaching and Learning Cycle

The Teaching and Learning Cycle will be used to assess the effectiveness of teaching and learning and to inform future practice. Teachers will have the Teaching and Learning Cycle visible and it will be used as a point of reference during meetings and professional discussions, in relation to teaching and learning.





At Nullagine Primary School teachers will implement a Gradual Release of Responsibility, enabling a balance between focused instruction, differentiated guided instruction, collaborative learning, independent practice and feedback.

